



SAMPSON COUNTY
911 & ES
FACILITIES

CLINTON,
NORTH CAROLINA

CONSTRUCTION
DOCUMENTS

SECTION DETAILS

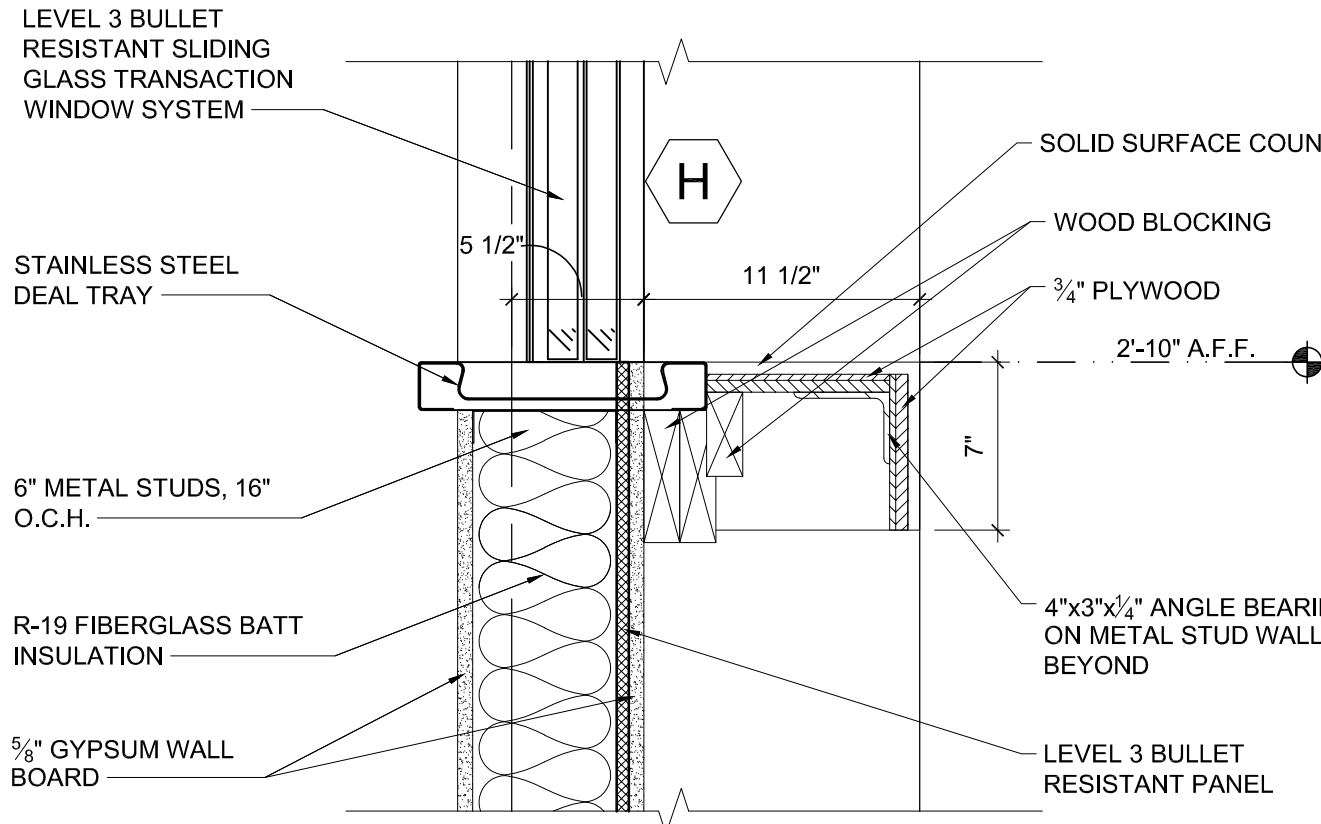
DATE	12.04.2020	
PROJECT NO	20003	
REVISIONS		
NUM.	DATE	DESCRIPTION:
REV1	12/17/20	REVISION 01

THIS DRAWING IS THE PROPERTY OF ADW ARCHITECTS, P.A. AND SHALL NOT BE REPRODUCED OR COPIED IN WHOLE OR IN PART. IT SHALL NOT BE USED ON ANY OTHER PROJECT OR GIVEN TO ANY OTHER COMPANY OR AGENCY WITHOUT THE CONSENT OF ADW ARCHITECTS, P.A.

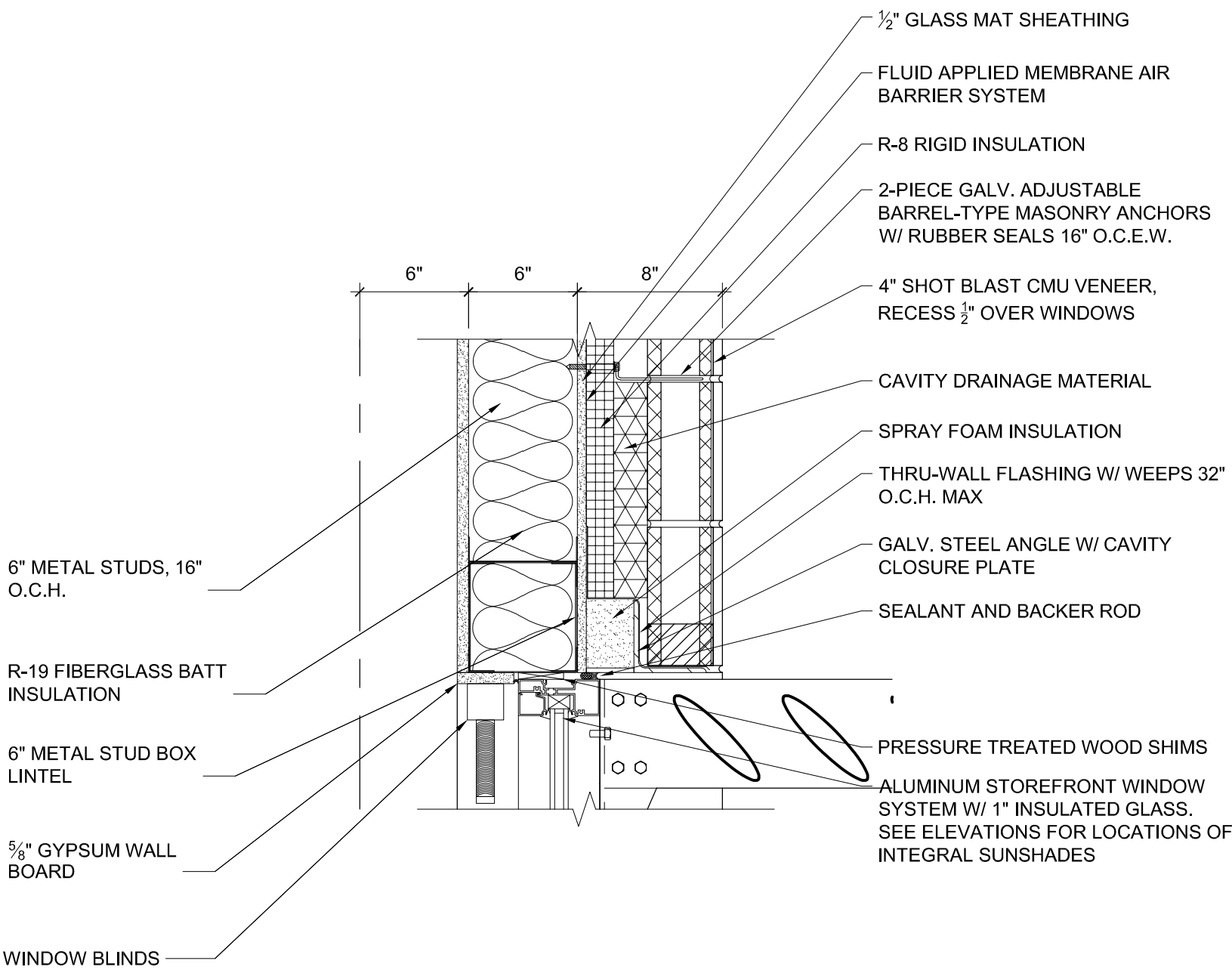


SHEET NUMBER

A406



REV 1
GENERAL NOTE COORDINATION



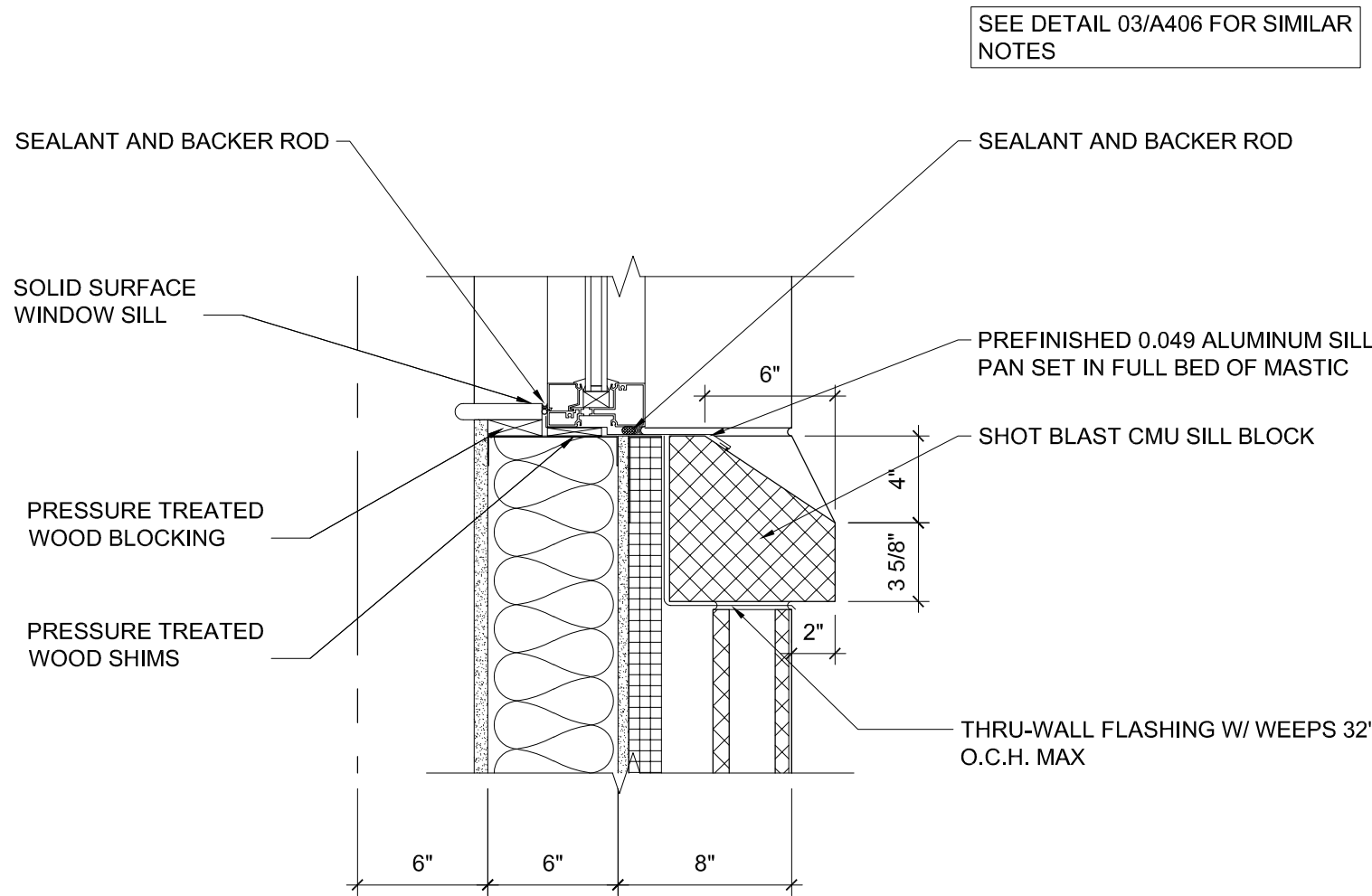
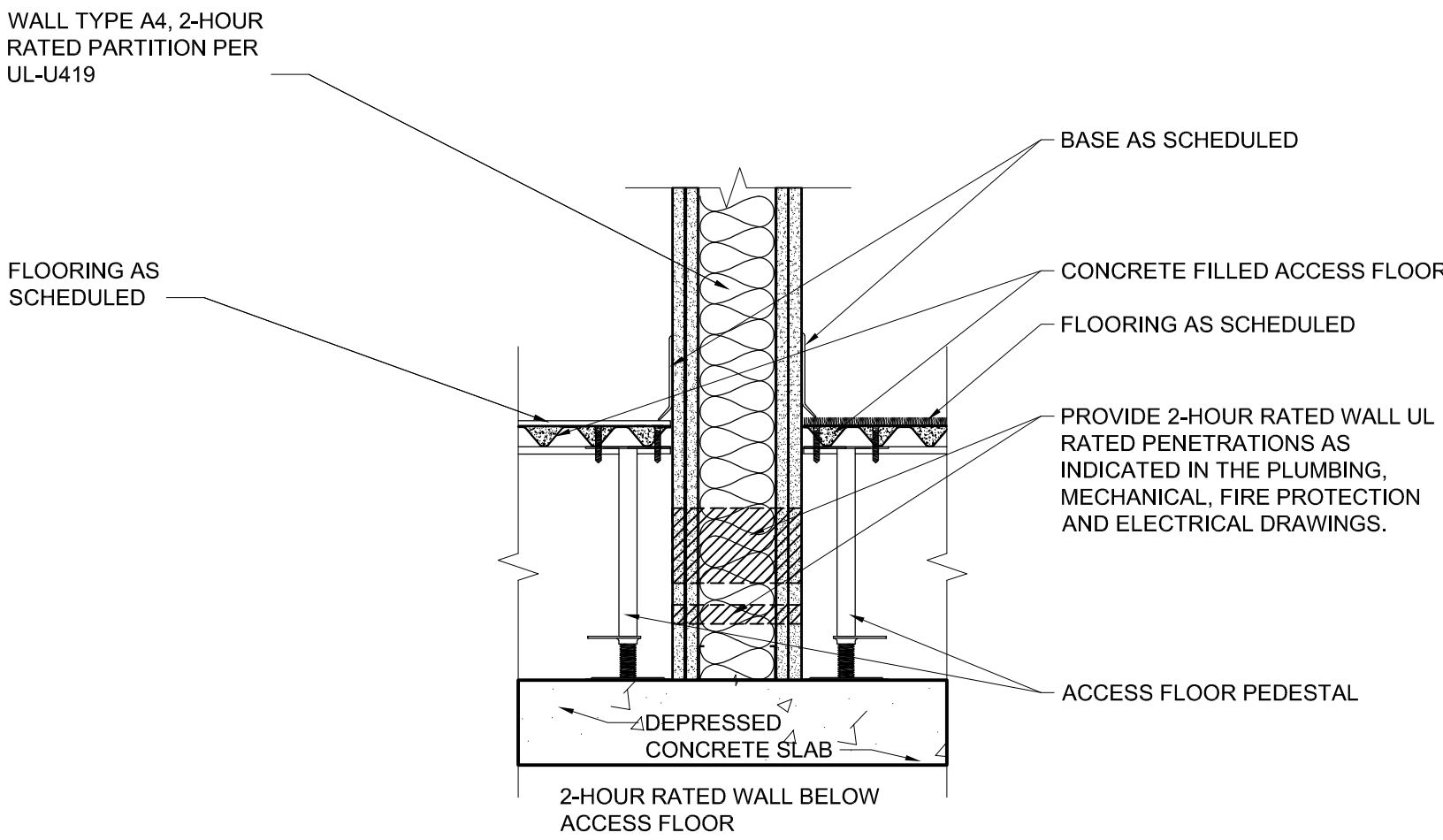
REV 1
GENERAL NOTE COORDINATION

NOT USED SCALE: NTA 12

NOT USED SCALE: NTA 09

SECTION DETAIL SCALE: 1 1/2" = 1'-0" 06

SECTION DETAIL SCALE: 1 1/2" = 1'-0" 03



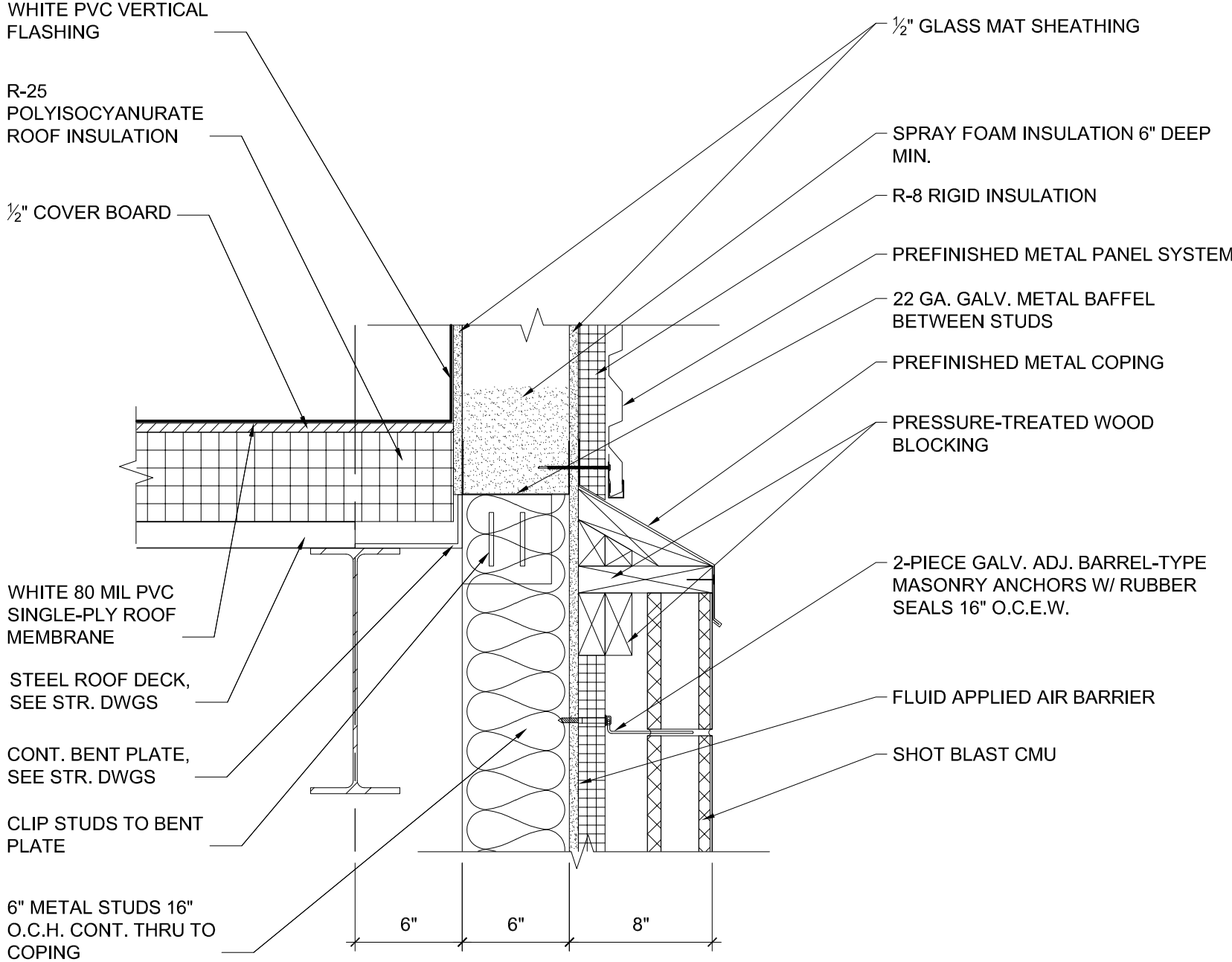
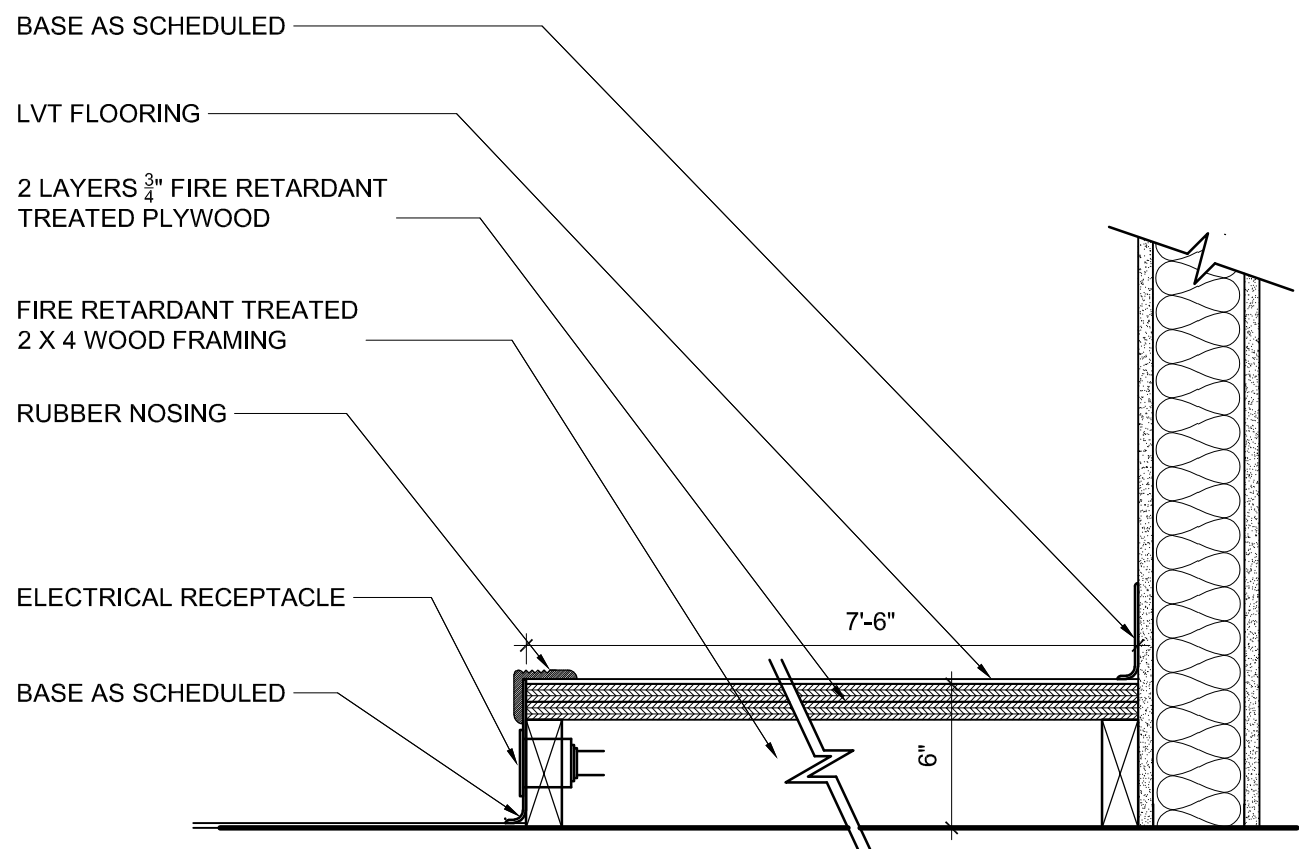
REV 1
GENERAL NOTE COORDINATION

NOT USED SCALE: NTA 11

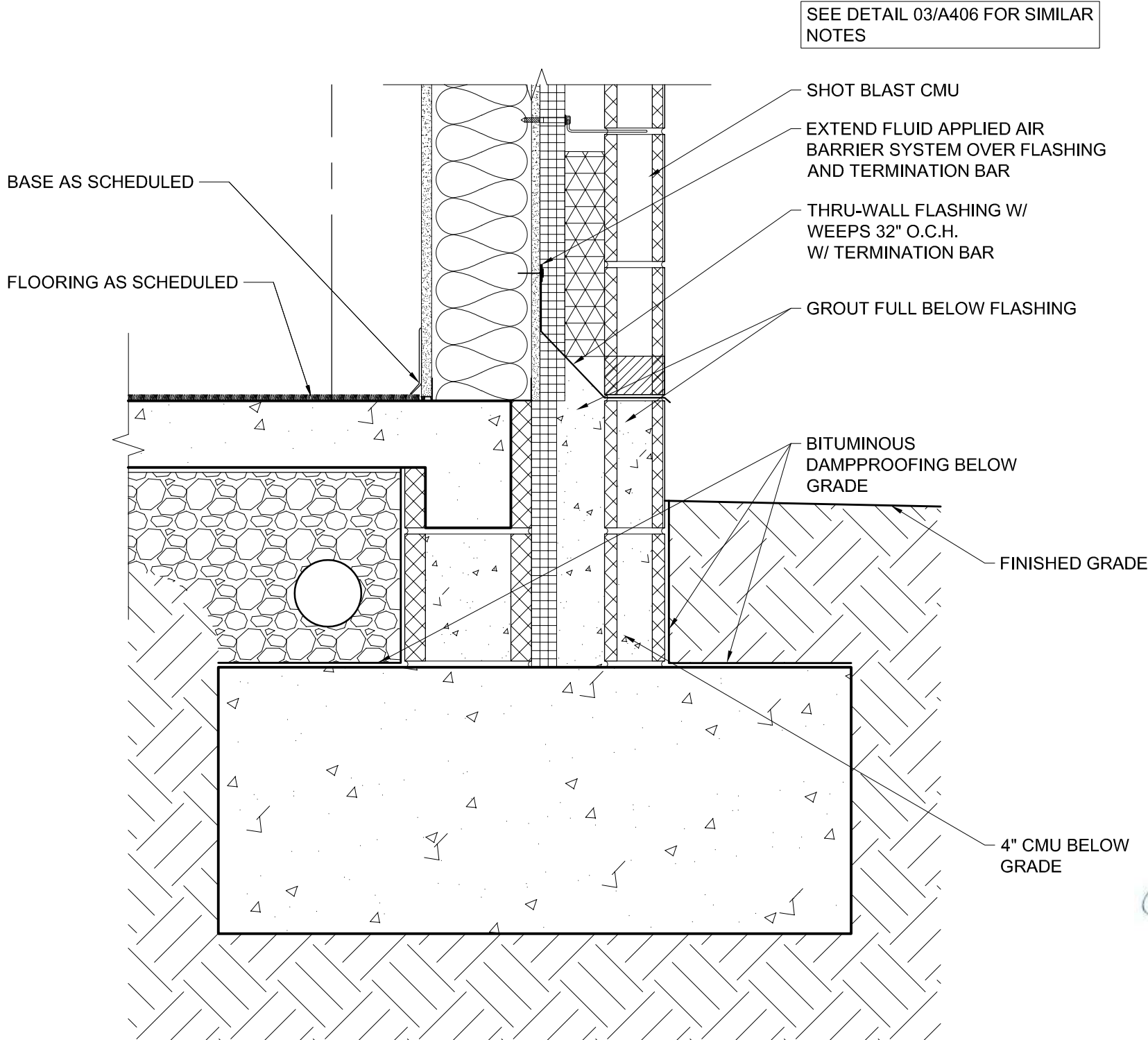
NOT USED SCALE: NTA 08

SECTION DETAIL SCALE: 1 1/2" = 1'-0" 05

SECTION DETAIL SCALE: 1 1/2" = 1'-0" 02



REV 1
GENERAL NOTE COORDINATION



REV 1
GENERAL NOTE COORDINATION

NOT USED SCALE: NTA 10

DIAS SECTION DETAIL SCALE: 1 1/2" = 1'-0" 07

SECTION DETAIL SCALE: 1 1/2" = 1'-0" 04

SECTION DETAIL SCALE: 1 1/2" = 1'-0" 01